

**FOR LEASE:**

**1,850 Sq. Ft. Office Located Next to Metra Train Station**  
747 N. Milwaukee Ave. • Suites 105 & 106 • Libertyville • IL 60048



**PROPERTY HIGHLIGHTS:**

**AVAILABLE SPACE:** 1,850 Sq. Ft.

**BUILDING TYPE:** Office

**CONSTRUCTION:** Brick/Block

**UTILITIES:** Tenant Pays Gas & Electric

**CEILING HEIGHT:** 9'

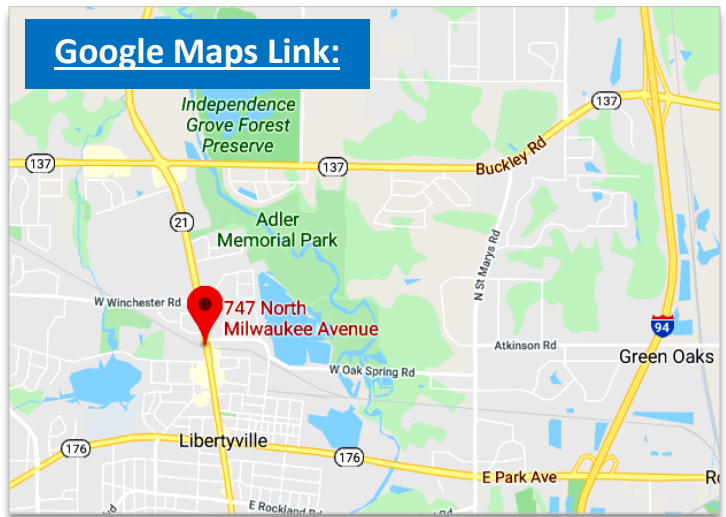
**POWER:** 200 Amps, 110/220 Volts

**HVAC:** Gas Forced Air, Central A/C

**PARKING:** Common Non-Assigned

**BASE RENT:** \$2000/Month Modified Gross

**AVAILABILITY:** Now



**DIRECTIONS:** Route 176 to Milwaukee Avenue, North to # west side of Milwaukee just south of commuter tracks.

**COMMENTS:** Very nice office space located next to Libertyville Train Station. Features open office area for cubicles, 4 private office, conference room, storage area, and 2 private washroom. Near downtown restaurants. Parking right outside unit.

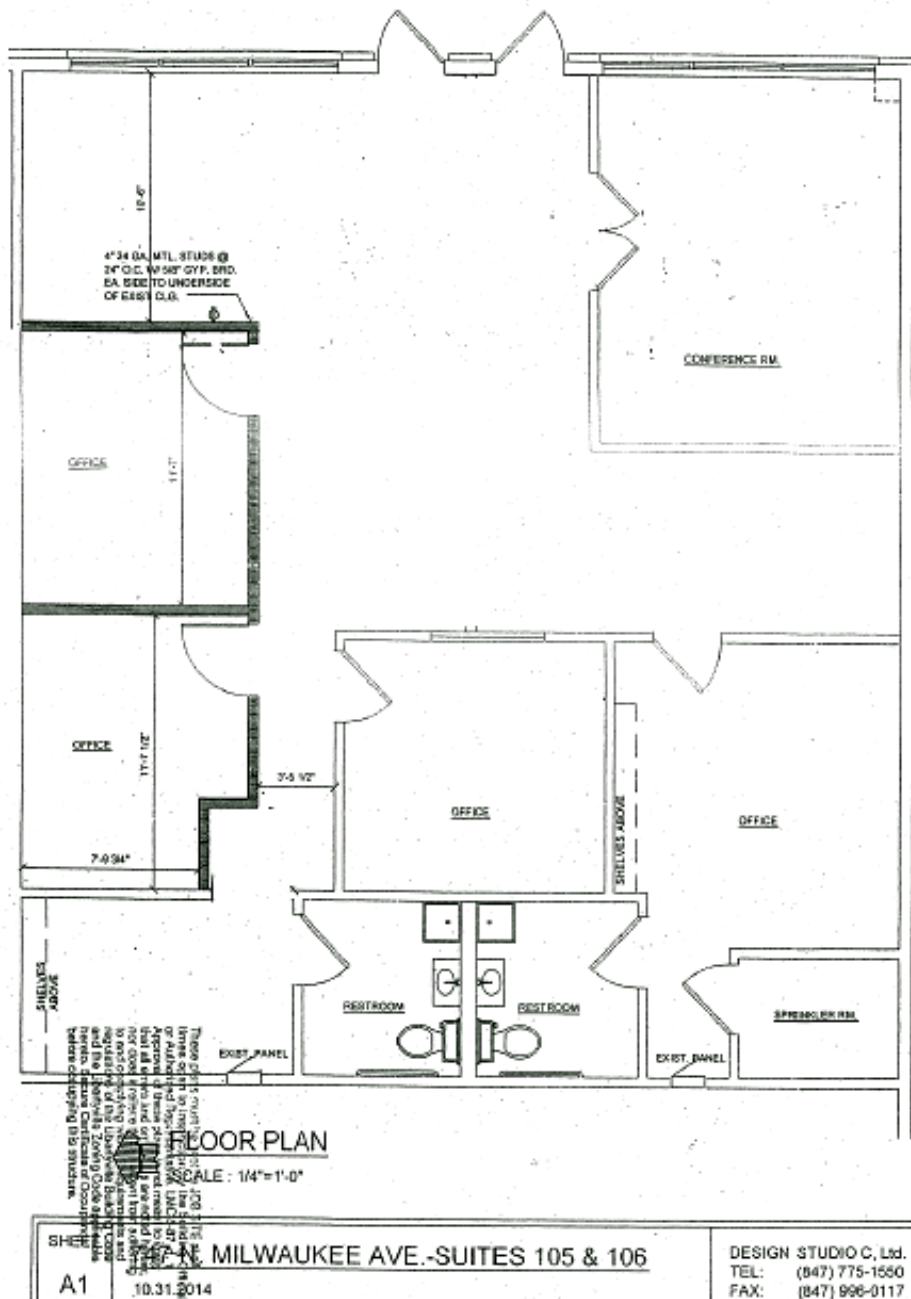
Contact: [Ken Eichelberger](mailto:Ken.Eichelberger@jcf.ike@sbcglobal.net) @ 847-533-7144 (Cell) / [jcf.ike@sbcglobal.net](mailto:jcf.ike@sbcglobal.net)



131 West Park Avenue • Libertyville • IL • 60048  
[www.jcforneym Realty.com](http://www.jcforneym Realty.com)  
Office: (847) 362-2000

**FOR LEASE:**

**1,850 Sq. Ft. Office Located Next to Metra Train Station**  
747 N. Milwaukee Ave. • Suites 105 & 106 • Libertyville • IL 60048



Contact: [Ken Eichelberger](mailto:jcf.ike@sbcglobal.net) @ 847-533-7144 (Cell) / [jcf.ike@sbcglobal.net](mailto:jcf.ike@sbcglobal.net)

JC **FORNEY** INC  
REALTY

*Serving Clients Since 1935*  
Commercial Real Estate Specialists

131 West Park Avenue • Libertyville • IL • 60048  
[www.jcforneyrealty.com](http://www.jcforneyrealty.com)  
Office: (847) 362-2000

All information contained herein is from sources deemed reliable and is submitted subject to errors, omissions, and change without notice.