

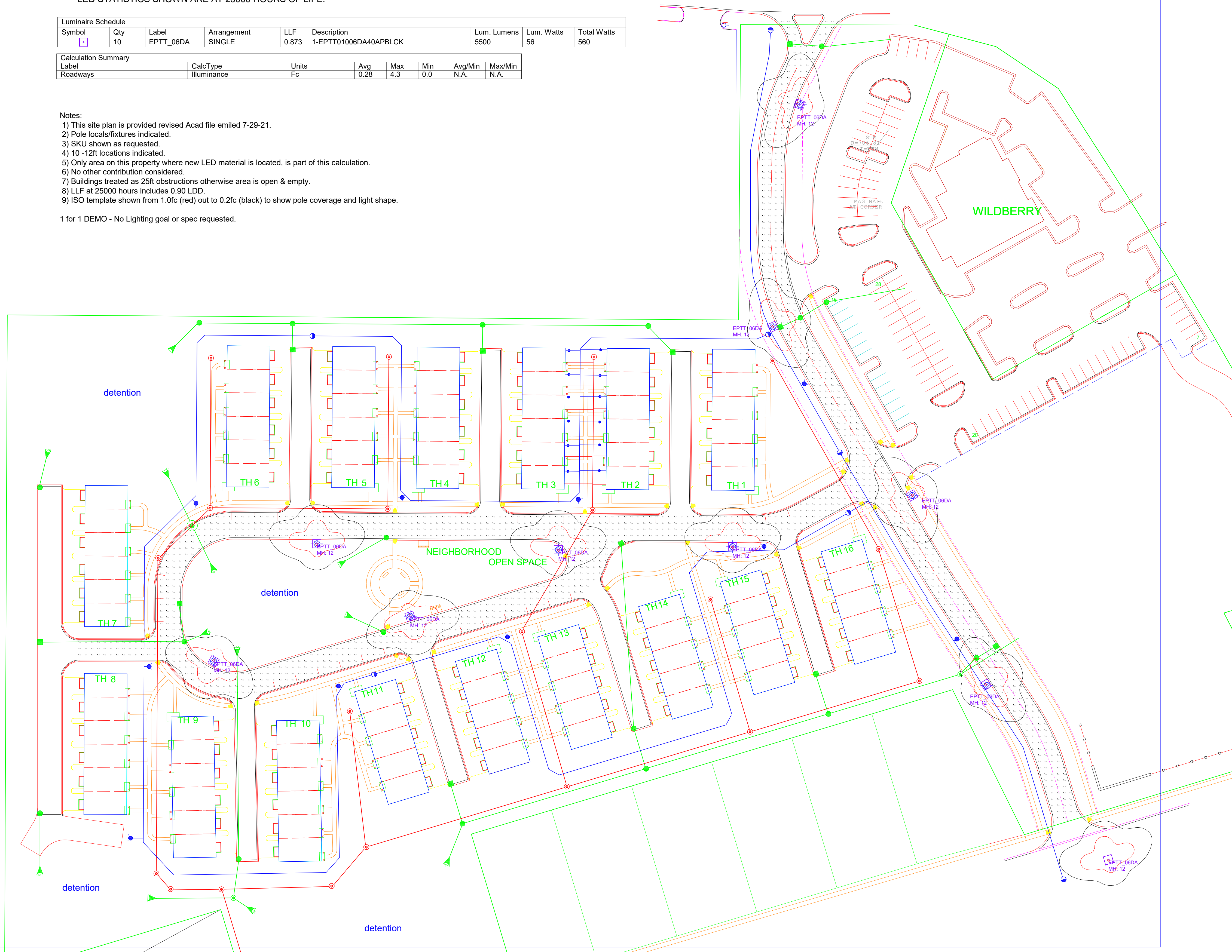
LED STATISTICS SHOWN ARE AT 25000 HOURS OF LIFE.

Luminaire Schedule								
Symbol	Qty	Label	Arrangement	LLF	Description	Lum. Lumens	Lum. Watts	Total Watts
□	10	EPTT_06DA	SINGLE	0.873	1-EPTT01006DA40APBLCK	5500	56	560

Calculation Summary						
Label	CalcType	Units	Avg	Max	Min	Max/Min
Roadways	Illuminance	Fc	0.28	4.3	0.0	N.A.

- Notes:
- 1) This site plan is provided revised Acad file emiled 7-29-21.
 - 2) Pole locals/fixtures indicated.
 - 3) SKU shown as requested.
 - 4) 10 -12ft locations indicated.
 - 5) Only area on this property where new LED material is located, is part of this calculation.
 - 6) No other contribution considered.
 - 7) Buildings treated as 25ft obstructions otherwise area is open & empty.
 - 8) LLF at 25000 hours includes 0.90 LDD.
 - 9) ISO template shown from 1.0fc (red) out to 0.2fc (black) to show pole coverage and light shape.

1 for 1 DEMO - No Lighting goal or spec requested.



Scale: 1 inch= 50 Ft.

THIS IS A D SIZE SHEET. THE NOTED SCALE IS NOT VALID IF PRINTED AS ANY OTHER SIZE.

The magnitude of the difference between detailed analysis methods and field measurements varies. In general, differences of less than 20% can be expected, but in some cases, where a calculation method cannot handle the complexity of the lighting system, they may be greater. A more complete discussion of the uncertainties is available.
ANSI (IES) E-16-03
Lighting Science: Calculation of Light and its Effects

Provided for:
Chris Von Kondrat
Lighting Solutions of IL

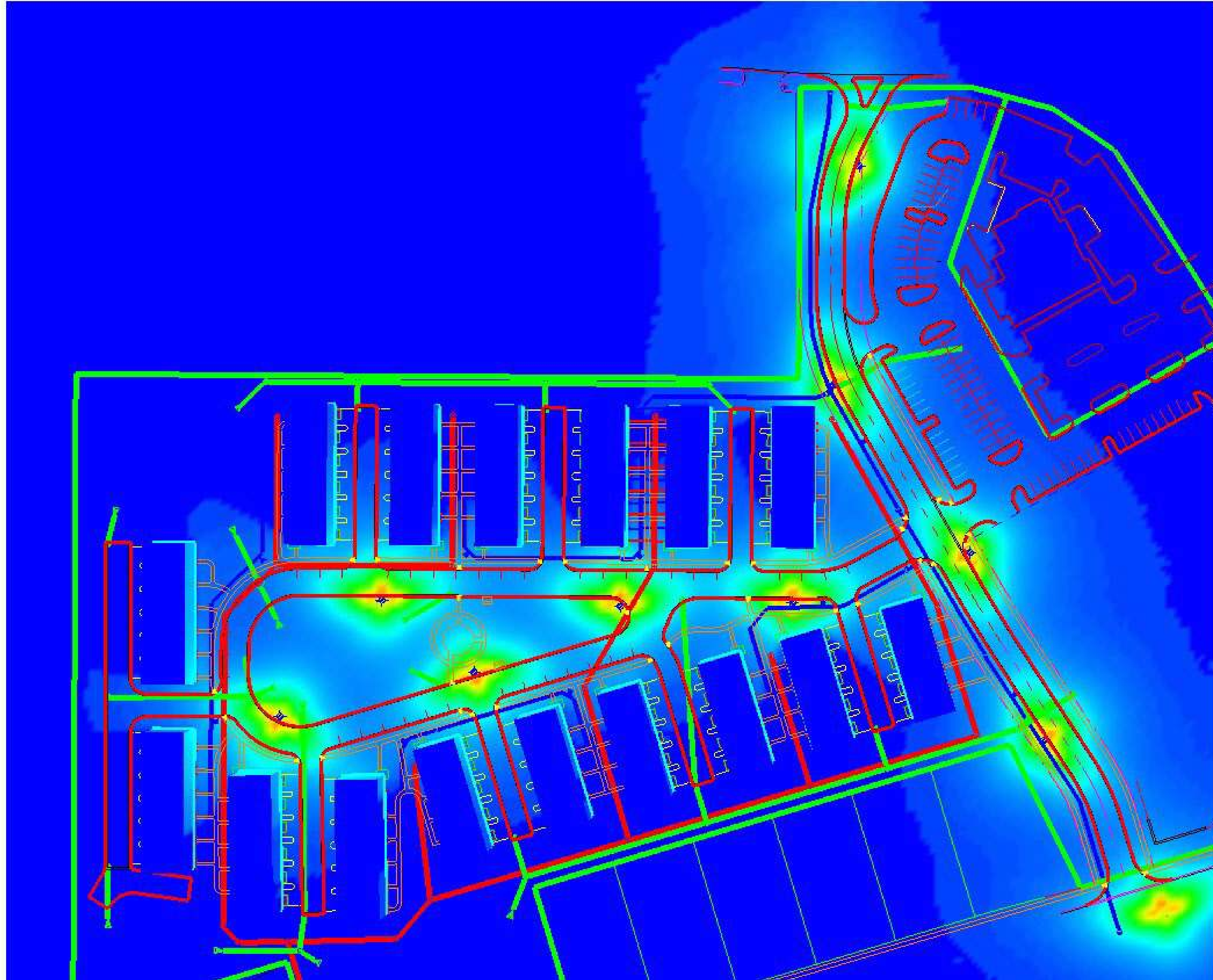
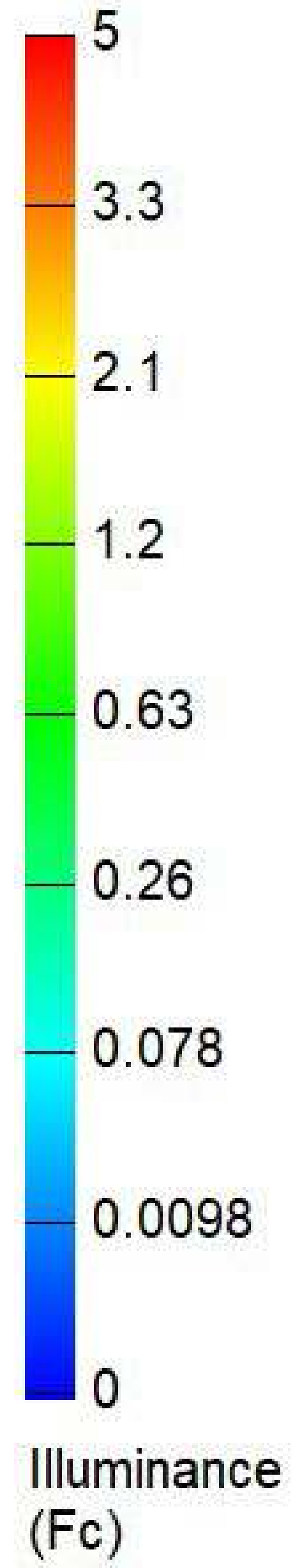
Provided By:
Application Solution Center
GE Current, a Daintree company
East Flat Rock, NC
P 1-828-393-3774

Designer: Debbie Johnson

Date: 7/29/2021

GE Drawing #: A210476B.AGI

LIBERTY JUNCTION
LIBERTYVILLE
Evolve Area Post Top EPTT 4000K
12ft mounting height
Horizontal FC's at grade
Values at 25000 hours
1 for 1 as requested
** rev acad file 7-29-21



RENDER IMAGE - NTS

The magnitude of the difference between detailed analysis methods and field measurements varies. In general, differences of less than 20% can be expected, but in some cases, where a calculation method cannot handle the complexity of the lighting system, they may be greater. A more complete discussion of the uncertainties is available.

ANSI (ES) C-63-3
Lighting Science: Calculation of Light and its Effects

Provided for:
Chris Von Kondrat
Lighting Solutions of IL

Provided BY:
Application Solution Center
GE Current, a Daintree company
East Flat Rock, NC
P 1-828-393-3774

Designer: Debbie Johnson

Date: 7/29/2021

GE Drawing #: A210476B.AGI

LIBERTY JUNCTION

LIBERTYVILLE
Evolve Area Post Top EPTT 4000K
12ft mounting height
Horizontal FC's at grade
Values at 25000 hours
1, for 1 as requested
** rev acad file 7-29-21 **