

FOR LEASE:

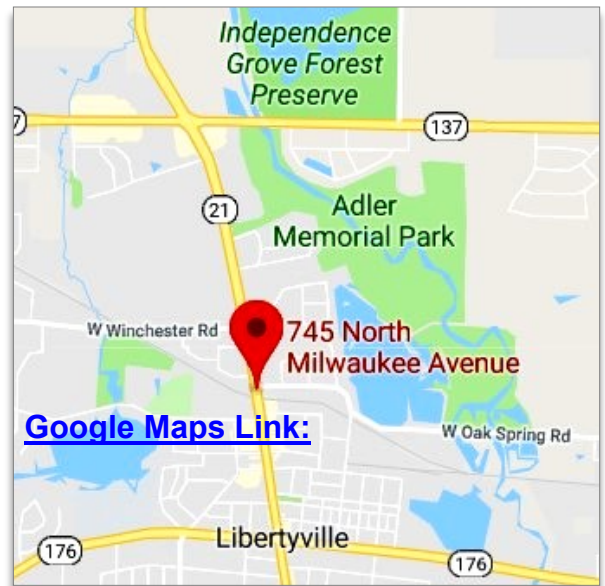
1,200 Sq. Ft. Office Unit

745 N. Milwaukee Avenue • Libertyville • IL 60048



PROPERTY HIGHLIGHTS:

- AVAILABLE SPACE:** 1,200 Sq. Ft.
- BUILDING TYPE:** Office
- BLDG. CONSTRUCTION:** Brick/Block
- UTILITIES:** Tenant Pays Gas & Electric
- CEILING HEIGHT:** 9'
- POWER:** 100 Amps, 110/220 Volts
- HVAC:** Gas Forced Air, Central AC
- PARKING:** Common, Non-Assigned
- BASE RENT:** \$1,400.00/Month
Modified Gross
- AVAILABILITY:** Now



COMMENTS: Very nice office space located next to Libertyville Train Station. Features open office area for cubicles, 3 private offices, storage area, and private washroom. Near downtown restaurants. Parking right outside unit.

Directions: Rt. 176 to Rt. 21/Milwaukee Ave., north to #, west side of Milwaukee Ave. just south of commuter tracks.

Contact: [Ken Eichelberger](#) @ 847-533-7144 (Cell) / jcf.ike@sbcglobal.net

JC **FORNEY** INC
REALTY

Commercial / Industrial / Investment
Serving Lake County Since 1935

131 West Park Avenue • Libertyville • IL • 60048
www.jcforneyrealty.com
Office: (847) 362-2000

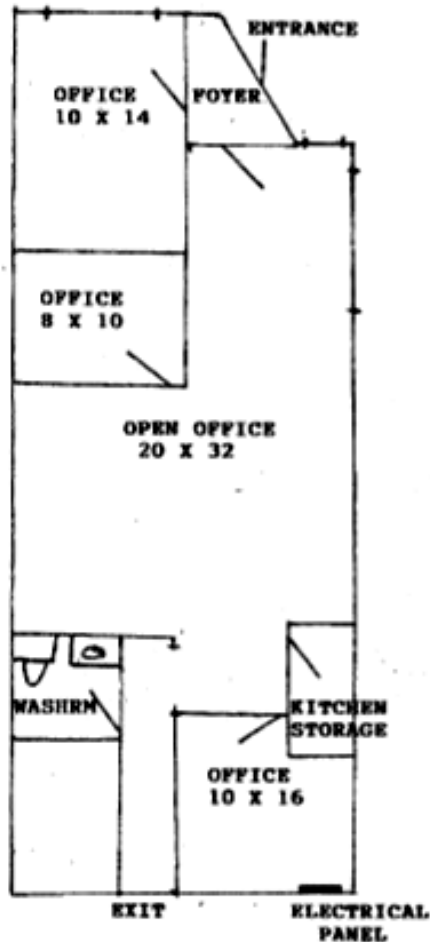
FOR LEASE:

1,200 Sq. Ft. Office Unit

745 N. Milwaukee Avenue • Libertyville • IL 60048

745 N MILWAUKEE AV LIBERTYVILLE ILLINOIS 60048

1200 SQ FT



Contact: [Ken Eichelberger](mailto:jcf.ike@sbcglobal.net) @ 847-533-7144 (Cell) / jcf.ike@sbcglobal.net

JC **FORNEY** INC
REALTY

Commercial / Industrial / Investment
Serving Lake County Since 1935

131 West Park Avenue • Libertyville • IL • 60048
www.jcforneyrealty.com
Office: (847) 362-2000